



UNISTREAM ENGRG. (S) PTE. LTD.

Moving beyond the flanges

A World of Pumps



JOHNSON PUMP



GOULDS PUMPS

Delivering pumping solutions since 1983, Unistream Engineering has grown from strength to strength to this day to become one of the most trusted and source after company, for providing variety of pumping systems and applications to a wide range of industries such as, Chemical Process, Petroleum, Oil and Gas, HVAC Building Services, Fire Protection, Marine Utility and Water Treatment, Ship/Boat Building, Food Processing and Pharmaceutical industries.



Moving beyond the flanges

Working closely with our reputable principals and manufacturers, we are committed to provide the best solution for customers' pumping needs with our vast experiences. We also provide testing and commissioning, after sales service, maintenance and overhaul as well as spare parts support to our customers.

Our product range includes,

- Ebsray Pump, providing medium and heavy duty positive displacement Rotary Gear, Sliding Vane & LPG pumps, suitable for handling a diverse variety of products.
- Ebsray Centrifugal Pump, covering End Suction, Split Casing, Multi-Stage and PSB labelled Fire pumps.
- ITT A-C Pump, offering NFPA20 UL listed, FM approved electric motor or diesel engine driven Fire pumps.
- ITT Goulds, providing ISO2858 End Suction, Axially Split Case and Multi-Stage centrifugal pumps.
- Johnson Pump, providing a wide range of DIN/ISO Centrifugal pumps, API 610 Process pumps, Self-Priming pumps, Flexible Impeller pumps and accessories for marine/boat applications.
- Inoxpa Pump, offering Stainless Steel hygienic Centrifugal pumps, Rotary Lobe and Progressive Cavity pumps.

APPLICATION REFERENCES:



Skid Mounted ITT A-C UL/FM Fire Pump Package



Ebsray Marine Class Ship Fire Pump Package



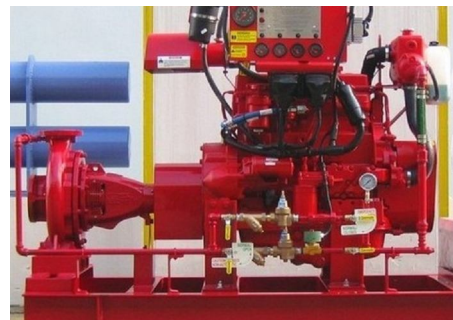
ITT A-C UL/FM Fire Pump with Acoustic Enclosure



Ebsray Rotary Internal Gear Pump



Ebsray Split Case HVAC Pump



Ebsray PSB Labelled Sprinkler Fire Pump

Horizontal End Suction Centrifugal Pump (DIN 24255)
STREAMLINE Series Specifications:

- Back pull-out feature
- Max Capacity: 150 l/s
- Max Head: 150 m
- Working Pressure: max 16 bar
- Temperature: max 105°C

Applications:

HVAC, Pressure Boosting
Water Supply, Transfer, Circulating
Fire Protection, Marine


Horizontal Axially Split Casing Pump
EHS Series Specifications:

- Single Stage or Double Stage,
- Vertical Configuration Available
- Max Capacity: 1000 l/s
- Max Head: 280 m
- Working Pressure: max 25 bar
- Temperature: max 100°C

Applications:

HVAC, Pressure Boosting
Water Supply, Transfer, Circulating
Fire Protection, Marine


Vertical Multi Stage Pump
EMVI Series Specifications:

- Stainless Steel Multi Stage Centrifugal
- Max Capacity: 50 l/s
- Max Head: 290 m
- Working Pressure: max 25 bar
- Temperature: max 120°C

Applications:

Pressure Boosting, Boiler Feed
Water Treatment, Transfer
Sprinkler System


Internal Gear Pump
MD & HD Series Specifications:

- General Purpose Heavy Duty PD Pump
- Capacity: max 80 l/s
- Diff Pressure: max 14 bar
- Viscosity: max 500,000 cSt
- Temperature: max 350°C

Applications:

Petroleum, Lub Oil and Fuel Oil
Chemical and Pharmaceutical
Paint and Paper, Marine industries


Internal Gear Pump
Z Series Specifications:

- General Purpose Low Flow Design PD Pump
- Capacity: max 24 l/m
- Diff Pressure: max 14 bar
- Viscosity: max 10,000 cSt
- Temperature: max 200°C

Applications:

Petroleum Lub Oil and Fuel Oil
Chemical and Pharmaceutical
Paint and Paper, Marine industries


Rotary Sliding Vane Pump
V Series Specifications:

- General Purpose Sliding Vane PD Pump
- Capacity: max 100 l/s
- Diff Pressure: max 14 bar
- Viscosity: max 10,000 cSt
- Temperature: max 100°C

Applications:

Petroleum, Fuel Oil & Edible Oil
Chemical and Pharmaceutical
Transport Tanker, Lub Oil
LPG Terminals, LPG Cylinder Filling


PSB Labelled Fire Pump
Centrifugal End Suction Pump Specifications:

- Electric Motor or Diesel Engine Driven
- Duty: Ordinary Hazard – 15 to 75 m (OH1, OH2, OH3)
- Working Pressure: max 16 bar
- Temperature: max 105°C

Applications:

Sprinkler System,
Hydrant System for
Commercial and
Industrial Buildings


Marine Fire Pump/NFPA20 Fire Pump
Axially Split Casing Pump Specifications:

- Single Stage or Double Stage,
- Max Capacity: 1000 l/s
- Max Head: 280 m
- Working Pressure: max 25 bar
- Temperature: max 100°C

Class Certification:

DNV, ABS, BV, GL
Lloyds, RINA, etc.

Applications:

Ship Fire Fighting, FiFi Unit





8100 Series
 Capacity up to 3000 GPM
 Pressure up to 255 PSI (179 m)



9100 Series
 Capacity up to 5000 GPM
 Pressure up to 208 PSI (146 m)



8200 Series
 Capacity up to 1000 GPM
 Pressure up to 640 PSI (450 m)
 Two stage design



In Line Series
 Capacity up to 1500 GPM
 Pressure up to 165 PSI (116 m)



Vertical Turbine Series
 Capacity up to 5000 GPM
 Pressure up to 350 PSI (247 m)
 Open line shaft design

Specifications:

- In compliance with NFPA 20 standard
- UL/ULC listed, FM approved
- Space saving design Horizontal Split Case, Vertical Turbine, In-Line and End Suction models
- Performance and hydrostatically tested in accordance with NFPA 20
- Standard cast iron casing, bronze fitted construction
- Ductile iron casing available for high-pressure applications
- Available in UL listed, FM approved diesel engine driven pump set
- Available in 50Hz or 60Hz electric motor driven pump set
- Complete with UL listed, FM approved fire pump controller
- Design to provide complete fire protection for Residential, Commercial, Public buildings and Industrial facilities.



Horizontal End Suction Centrifugal Pump (ISO 2858)

GISO Series Specifications:

- Back pull-out feature
- Max Capacity: 900 m3/h
- Max Head: 160 m
- Working Pressure: max 16 bar
- Temperature: max 100°C

Applications:

HVAC, Pressure Boosting
 Water Supply, Transfer, Circulating
 Water Treatment



Horizontal Split Case Centrifugal Pump

GSC & HSC Series Specifications:

- Single Stage Double Entry
- Max Capacity: 18000 m3/h (GSC)
- Max Capacity: 1500 m3/h (HSC)
- Max Head: 180 m
- Working Pressure: max 25 bar
- Temperature: max 105°C

Applications:

HVAC, Pressure Boosting
 Water Supply, Transfer,
 Circulating, Water Treatment
 Fire Protection



Multi Stage Centrifugal Pump

P Series Specifications:

- Horizontal or Vertical Configuration
- Max Capacity: 1800 m3/h
- Max Head: 300 m
- Working Pressure: max 45 bar
- Temperature: max 120°C

Applications:

HVAC, Pressure Boosting
 Water Supply, Transfer
 Boiler Feed, Water Treatment



Vertical Turbine Pump


Specifications:

- Line Shaft or Submersible
- Max Capacity: 400 m3/h
- Max Head: 300 m
- Max Speed: 3600 rpm
- Vertical Hollow Shaft or Solid Shaft Motors


Applications:

Dewatering, Irrigation
 Municipal Water Supply
 Pressure Boosting






CombiNorm
Centrifugal Pump to DIN 24255
 Max. Capacity 1500 m3/h
 Max. Head 140 m
 Max. Pressure 16 bar
 Max. Temp 200° C
 Applications: Utility, Marine,
 General Purpose for any applications.



CombiChem
Centrifugal Pump to ISO 5199
 Max. Capacity 800 m3/h
 Max. Head 160 m
 Max. Pressure 16 bar
 Max. Temp 200° C
 Applications: Heavy duty pump for
 Chemical Process and Marine industries.




FreFlow FRE
Self-Priming Centrifugal Pump
 Max. Capacity 350 m3/h
 Max. Head 80 m
 Max. Pressure 9 bar
 Max. Temp 95° C
 Applications: General Purpose,
 Water Treatment and Marine industries.




KGE
Self-Priming Centrifugal Pump
 Max. Capacity 100 m3/h
 Max. Head 60 m
 Max. Pressure 8 bar
 Max. Temp 95° C
 Applications: General Purpose,
 Water Treatment and Marine industries.




CombiPrime Vertical
Self-Priming Centrifugal Pump
 Max. Capacity 800 m3/h
 Max. Head 100 m
 Max. Pressure 10 bar
 Max. Temp 80° C
 Applications: General Purpose,
 Water Treatment and Marine industries.




CombiPrime Horizontal
Self-Priming Centrifugal Pump
 Max. Capacity 500 m3/h
 Max. Head 100 m
 Max. Pressure 10 bar
 Max. Temp 80° C
 Applications: General Purpose,
 Water Treatment and Marine industries.




CombiPro
API 610 Process Centrifugal Pump
 Max. Capacity 350 m3/h
 Max. Head 160 m
 Max. Pressure 35 bar
 Max. Temp 350° C
 Applications: Heavy duty for Oil & Gas,
 Chemical and Process industries.



CombiBloc
Close-Coupled Centrifugal Pump
 Max. Capacity 850 m3/h
 Max. Head 105 m
 Max. Pressure 10 bar
 Max. Temp 110° C
 Applications: General Purpose, Utility
 Water Treatment and Marine industries.



CombiFlex
Vertical Centrifugal Pump
 Max. Capacity 1500 m3/h
 Max. Head 140 m
 Max. Pressure 10 bar
 Max. Temp 200° C
 Applications: General Purpose, Utility
 Water Treatment and Marine industries.



MCH & MCV (Horizontal & Vertical)
Multi-stage Centrifugal Pump
 Max. Capacity 100 m3/h
 Max. Head 340 m
 Max. Pressure 40 bar
 Max. Temp 120° C
 Applications: General Purpose, Utility
 Water Treatment and Marine industries.

Bilge Pumps



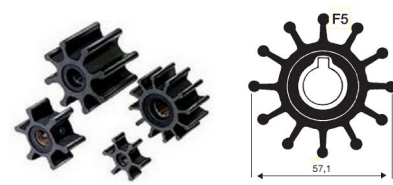
Circulation Pumps



Macerator Pumps/Marine Toilet



Flexible Impellers



Flexible Impeller Engine Cooling Pumps



DC Driven Flexible Impeller Pumps



Marine Water Heater & Blower



Water Pressure Systems



Hand Operated Bilge Pump



Low Boy Bilge Pump



Stainless Steel Hygienic Centrifugal/Self-Priming Pumps, Lobe Rotor Pump and Progressive Cavity Pump

PUMP SERIES							
	SLR Lobe	Estampinox EFI/EFH	Hyginox SH	ASPIR Self Priming	Hyginox SE	Prolac S	KIBER KS/KSF
Max. Flow	160 m3/h	65 m3/h	150 m3/h	56 m3/h	100 m3/h	425 m3/h	60 m3/h
Max. Head	200 m	45 m	100 m	90 m	75 m	200 m	120 m
Max. Temp	120° C	90° C	120° C	120° C	120° C	120° C	90° C
Max. Speed	1450 rpm	3500 rpm	3500 rpm	1750 rpm	3500 rpm	3500 rpm	1450 rpm
Material	SS 316L	SS 316L	SS 316L	SS 316L	SS 316L	SS 316L	SS 316L
Applications	Food Processing, Pharmaceutical, Cosmetics, Water Treatment & Chemical, Dairies & Beverages industries.						

For more information about our products, please contact below emails or visit www.unistream.com.sg


UNISTREAM ENGRG. (S) PTE. LTD.

Blk 194, Pandan Loop
 #05-22, Pantech Business Hub
 Singapore 128383
 Tel: (65) 68722788 Fax: (65) 68724988
 Email: stream@singnet.com.sg sales@unistream.com.sg
 Web: www.unistream.com.sg