

I Application

Prolac HP is a sanitary centrifugal pump that meets the highest hygienic requirements and it can be used in the applications of the food processing and pharmaceutical industries. It is designed to operate under high pressures at the suction side of the pump, for example, in systems of filtration or reverse osmosis. Due to the design, the working pressure can reach 40 bars.

I Operating principle

The impeller consists of a definite number of vanes according to the model of the pump, housed inside the pump casing it rotates together with the shaft of the pump.

Due to this assembly, the impeller transfers energy to the medium in form of kinetic and pressure energy.

The pump is not reversible by a simple reversal of the direction of rotation. The direction of rotation is clockwise when the pump is viewed from the rear part of the motor.

I Design and features

One-piece machined pump casing.

Pump casing fixed with screws.

DIN connections (standard).

Impeller: open or semi-open according to the size.

Special hygienic balanced mechanical seal designed to work under high pressures.

Robust stainless steel lantern.

Motors IEC B35 with heavy-duty bearings, IP55, F-class insulation.

I Materials

Parts in contact with the media:

AISI 316L

Other parts:

AISI 304

Gaskets (standard):

EPDM in compliance with FDA

Mechanical seal (standard):

SiC/C/EPDM

Internal surface finish:

Ra < 0,8µm

External surface finish:

mirror polished



I Options

Motor with/without shroud.

Connections: Clamp, SMS, RJT.

Other motor protections.

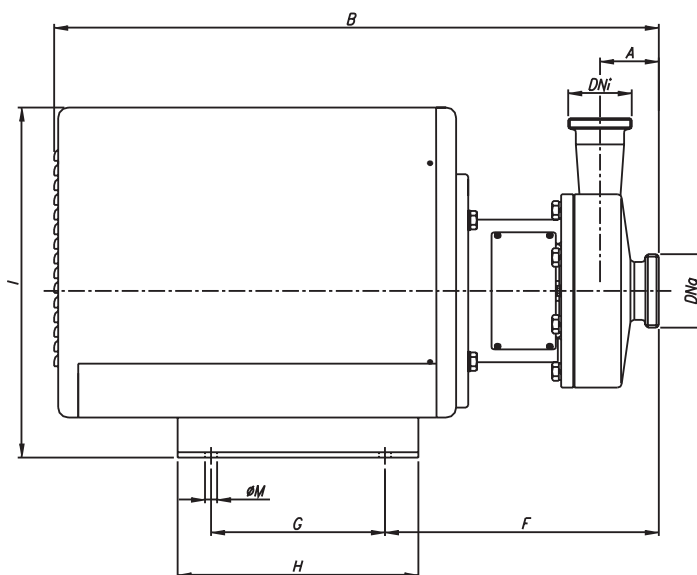
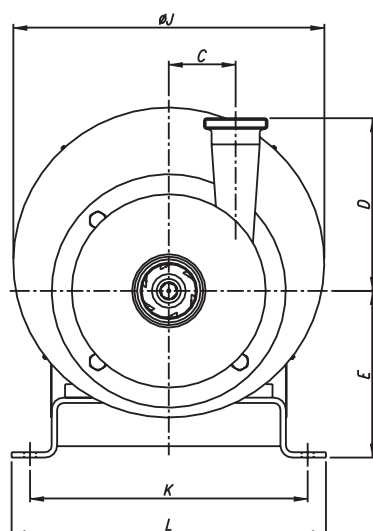
Gaskets: FPM or PTFE.

Quench.

I Technical specifications (50Hz)

Max.flow	160 m ³ /h	704 US GPM
Max. differential head	55 m	197 ft
Max.working pressure	40 bar	580 PSI
Max.working temperature*	120 °C	248 °F
Max.speed	3000 rpm	

* EPDM gaskets (standard).



SIZE	MOTOR	DNa	DNi	A	B	C	D	E	F	G	H	I	Ø J	K	L	Ø M
S-26 HP ^D _E	100	65	50	76	600	79	239	170	290	140	185	355	330	265	295	13
	112								297							
S-35 HP ^F	132	65	50	84	740	101	284	192	358	170	220	410	380	310	350	13
S-37 HP ^G	160	80	65	88	905	100	259	250	410	260	360	525	465	415	470	18
S-38 HP ^G _H _J	160	100	80	115	930	107	365	250	433	260	360	505	465	415	470	18
	180							458	458			525				
	200							340	460			690			600	23

